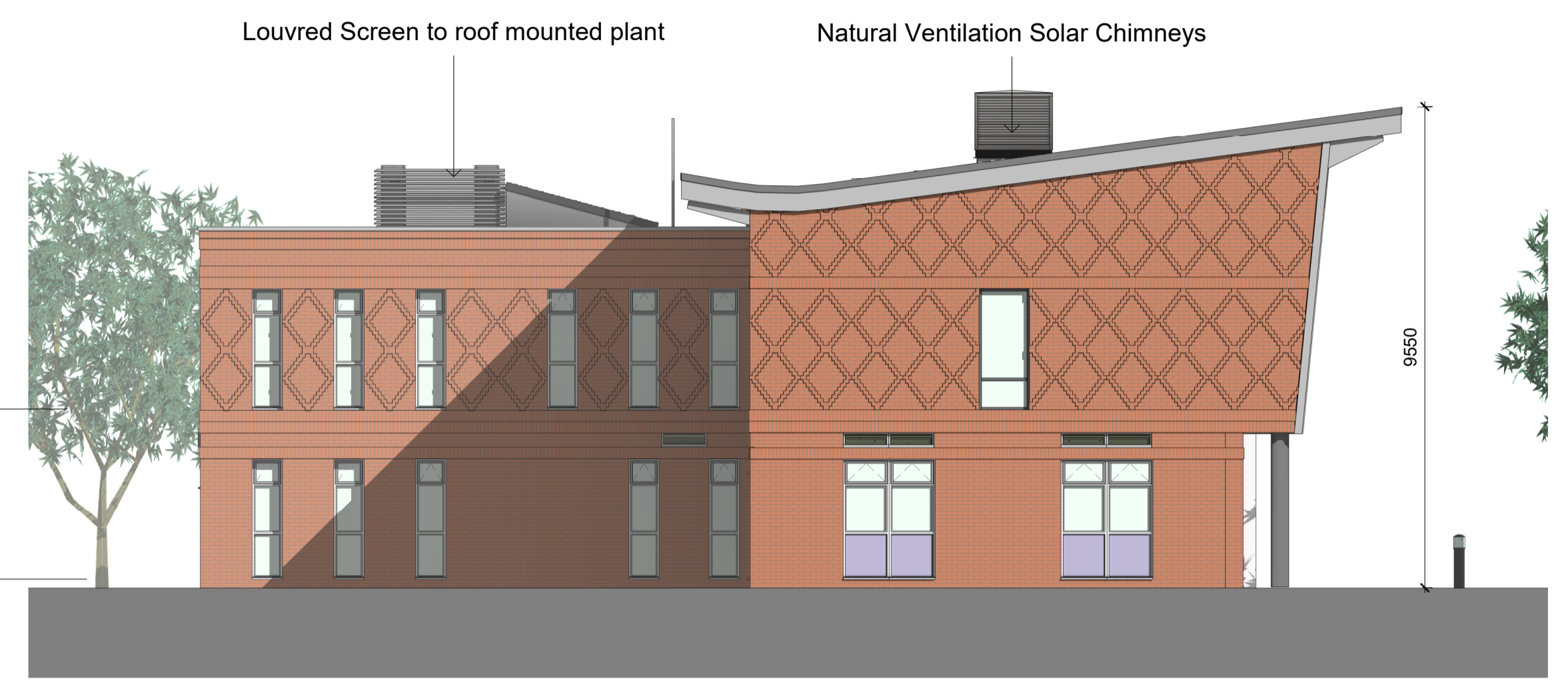


**1 North Facing (Front) Elevation**  
1 : 100



**2 East Facing (Side) Elevation**  
1 : 100

**Materials**

- Walls : Brick with diamond pattern.
- Roof : Aluminium standing seam & single ply membrane to flat roof.
- Windows: PPC Aluminium RAL 7012.
- Doors: PPC Aluminium RAL 7012.
- Rainwater goods: PPC Aluminium RAL 7012.
- Exposed Structure: Concrete.
- Balcony & Stair: Painted steel with glass balustrades RAL 7012.



**3 South Facing (Rear) Elevation**  
1 : 100



**4 West Facing (Side) Elevation**  
1 : 100

| REV. DATE: | REVISIONS:          | REV. DATE: | REVISIONS: | REV. DATE: | REVISIONS: |
|------------|---------------------|------------|------------|------------|------------|
| A 02-12-21 | Minor updates       |            |            |            |            |
| B 10-12-21 | General amendments. |            |            |            |            |
| C 17-12-21 | General amendments. |            |            |            |            |

**SCALES:**

|           |       |
|-----------|-------|
| 1:50@A1   | 0.3 M |
| 1:50@A1   | 3 M   |
| 1:50@A1   | 30 M  |
| 1:10@A1   | 0.8 M |
| 1:100@A1  | 8 M   |
| 1:1000@A1 | 80 M  |
| 1:20@A1   | 1.2 M |
| 1:200@A1  | 12 M  |
| 1:2000@A1 | 120 M |
| 1:1250@A1 | 70 M  |
| 1:2500@A1 | 140 M |

|            |                                   |         |                                      |
|------------|-----------------------------------|---------|--------------------------------------|
| CLIENT     | <b>Woldingham School</b>          | PROJECT | <b>Library and Sixth Form Centre</b> |
| SCALE      | <b>As indicated</b> (A1 ORIGINAL) | DRAWING | <b>Proposed Elevations</b>           |
| DRAWN DATE | <b>DJB 22/06/21</b>               | 19207   | P107 C                               |

**osp**  
architecture planning masterplanning  
Broadmeade House, Farnham Business Park,  
Weydon Lane, Farnham, Surrey, GU9 8QT.  
info@osparchitecture.com www.osparchitecture.com  
Tel: 01252 267878